

CLEAT LINE



**AGGRESSIVE TRANSFER
AND ELEVATION OF MATERIALS**

Free flowing materials handling

The CleatLine® molded cleats ensure years of trouble free service.

www.fennerdunlopamericas.com

Choose from eight proven patterns



Longest Lasting Conveyor Belts in the World™

Expertise in not only standard weave, but also patented straight warp and dual crimp weaves.

Engineered to Withstand the Heaviest Loads, While Conserving Energy™

We are mindful of the materials we use in our carcasses, minimizing the impact to the environment while increasing durability.

State of the Art Weaving Facility and Belt Manufacturing in North America™

We build our belts from the inside out, resulting in belts that consistently outperform the competition in rigorous applications.

Over 150 Years in the Industry Enhanced by Today's Technology™

Our engineers are constantly improving our materials and processes to maximize your uptime and revenue.

CleatLine®

No more trouble with **free flowing materials** transport

Made for aggressive transfer and elevation of free flowing materials, our CleatLine® gives you efficient, smooth operation over return idlers and quick pick-up at loading points. Cleat patterns are molded into the belt – no separation problems or vulcanising of cleats to the belt.

Markets and Applications



Grain



Wood chips



Bark



Cement



Light aggregates



Materials handled on road machines



X Series Carcass Family

1st to market, best in class



USFLEX



NOVA-X



PLYLOK
GROUP

Plylok Carcass Family

The best engineered plied belting for higher tension ratings



PLYLOK
SUPREME



PLYLOK
MASTER

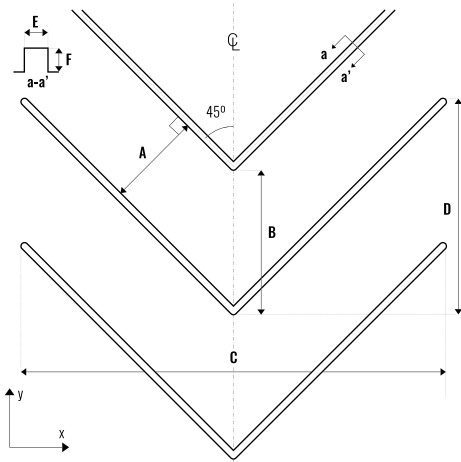
CHEVRON 24 & 42



Carcasses

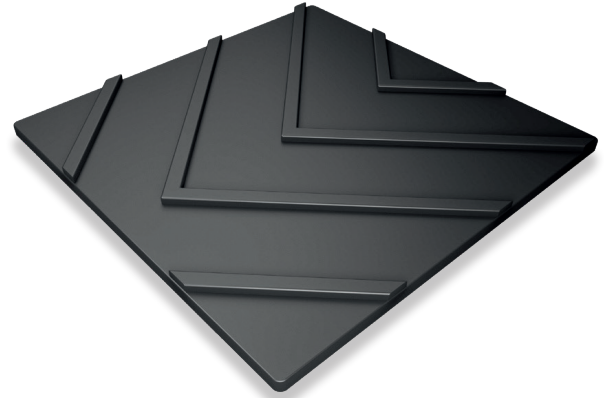
UsFlex®, Nova-X®, PlylokSupreme®, PlylokMaster®

Please contact your representative to get detailed information about cover compounds availability.



Dimensions

Reference	Chevron 24	Chevron 42
A	6"	8"
B	9"	12"
C	24"	42"
D	12"	21"
E	3/8"	1/2"
F	3/8"	1/2"
G	Any in spec	Any in spec
Min belt width	36"	48"
Max belt width	48"	72"
Available widths	Any in spec	Any in spec
Slit widths	None	None



Gauge Requirements

Min top cover	3/16"
Max top cover	As requested
Min bottom cover	0.00" (Bareback)
Max bottom cover	As requested
Between Ply Skim	Carcass dependent
Top Skim	Carcass dependent
Bottom Skim	Carcass dependent

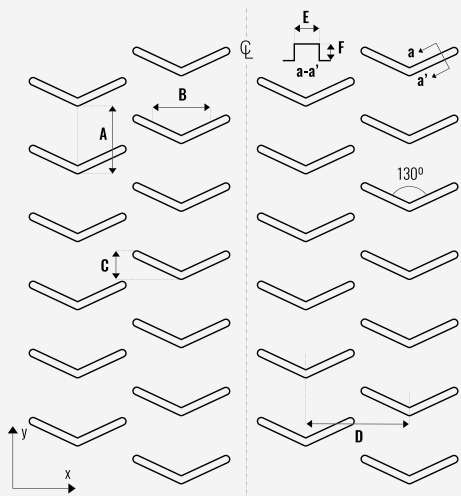
V-TOP



Carcasses

UsFlex®, Nova-X®, PlylokSupreme®, PlylokMaster®

Please contact your representative to get detailed information about cover compounds availability.



Dimensions

Reference	V-Top
A	4"
B	5 1/2"
C	19/16"
D	6"
E	3/8"
F	1/4"
G	Any in spec
Min belt width	36"
Max belt width	72"
Available widths	Any in spec
Slit widths	Any in spec



Gauge Requirements

Min top cover	1/8"
Max top cover	As requested
Min bottom cover	0.00" (Bareback)
Max bottom cover	As requested
Between Ply Skim	Carcass dependent
Top Skim	Carcass dependent
Bottom Skim	Carcass dependent

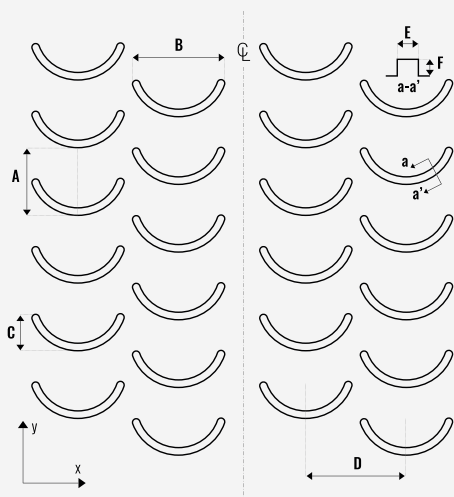
C-TOP



Carcasses

UsFlex®, Nova-X®, PlylokSupreme®, PlylokMaster®

Please contact your representative to get detailed information about cover compounds availability.



Dimensions

Reference	C-Top
A	4 3/8"
B	5 1/2"
C	2 3/16"
D	6"
E	5/16"
F	1/4"
G	Any in spec
Min belt width	36"
Max belt width	72"
Available widths	Any in spec
Slit widths	Any in spec



Gauge Requirements

Min top cover	1/8"
Max top cover	As requested
Min bottom cover	0.00" (Bareback)
Max bottom cover	As requested
Between Ply Skim	Carcass dependent
Top Skim	Carcass dependent
Bottom Skim	Carcass dependent

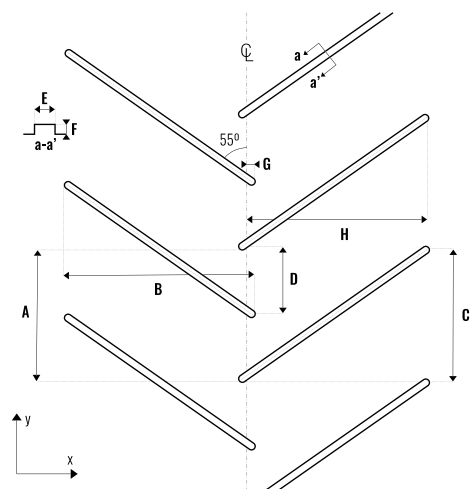
F-18 & F-36



Carcasses

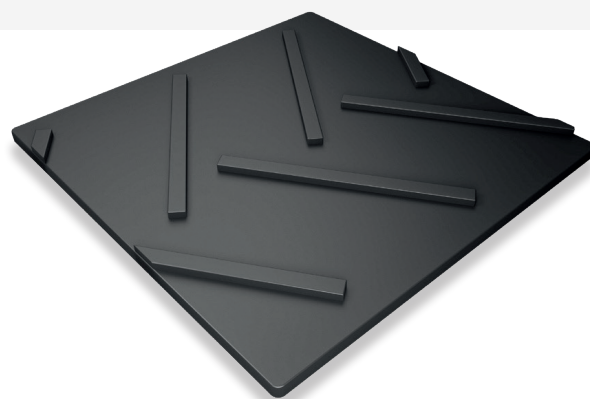
UsFlex®, Nova-X®, PlylokSupreme®, PlylokMaster®

Please contact your representative to get detailed information about cover compounds availability.



Dimensions

Reference	F-18	F-36
A	8"	8"
B	18"	36"
C	7"	13 1/5"
D	4"	4"
E	3/8"	3/8"
F	3/16"	3/16"
G	5/16"	5/16"
Min belt width	36"	42"
Max belt width	72"	72"
Available widths	Any in spec	Any in spec
Slit widths	Any in spec	Any in spec



Gauge Requirements

Min top cover	1/8"
Max top cover	As requested
Min bottom cover	0.00" (Bareback)
Max bottom cover	As requested
Between Ply Skim	Carcass dependent
Top Skim	Carcass dependent
Bottom Skim	Carcass dependent

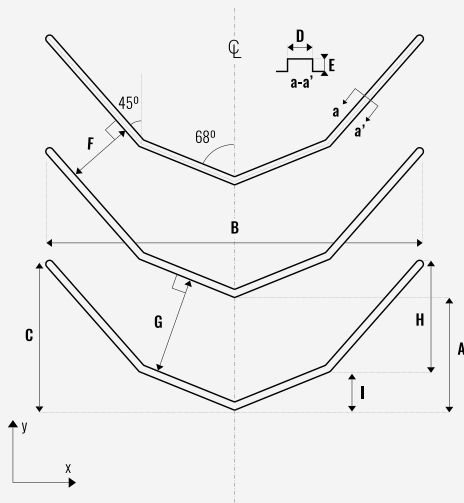
B-TOP



Carcasses

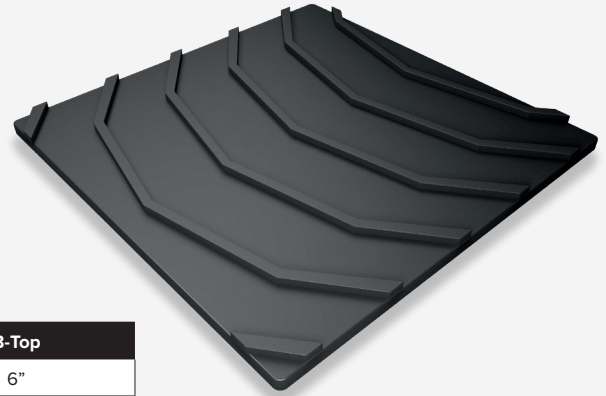
UsFlex®, Nova-X®, PlylokSupreme®, PlylokMaster®

Please contact your representative to get detailed information about cover compounds availability.



Dimensions

Reference	B-Top
A	6"
B	22"
C	8 1/2"
D	1/2"
E	1/4"
F	4 1/4"
G	5 1/2"
H	6 1/4"
I	2 1/4"
J	Any in spec
Min belt width	36"
Max belt width	72"
Available widths	Any in spec
Slit widths	Any in spec



Gauge Requirements

Min top cover	1/8"
Max top cover	As requested
Min bottom cover	0.00" (Bareback)
Max bottom cover	As requested
Between Ply Skim	Carcass dependent
Top Skim	Carcass dependent
Bottom Skim	Carcass dependent

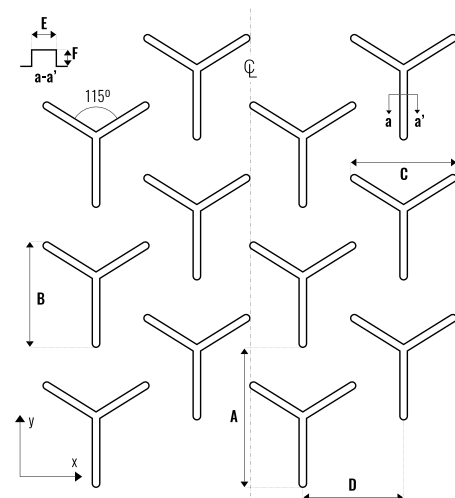
Y-TOP



Carcasses

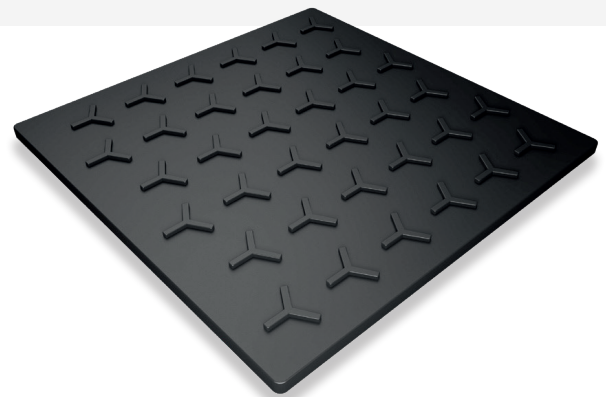
UsFlex®, Nova-X®, PlylokSupreme®, PlylokMaster®

Please contact your representative to get detailed information about cover compounds availability.



Dimensions

Reference	Y-Top
A	8"
B	6"
C	6"
D	6"
E	3/8"
F	1/4"
G	Any in spec
Min belt width	36"
Max belt width	72"
Available widths	Any in spec
Slit widths	Any in spec



Gauge Requirements

Min top cover	1/8"
Max top cover	As requested
Min bottom cover	0.00" (Bareback)
Max bottom cover	As requested
Between Ply Skim	Carcass dependent
Top Skim	Carcass dependent
Bottom Skim	Carcass dependent

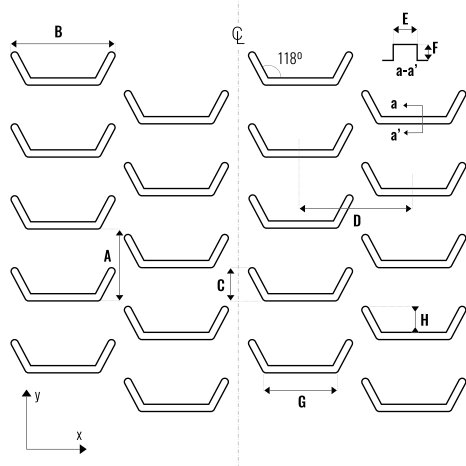
BUCKET TOP



Carcasses

UsFlex®, Nova-X®, PlylokSupreme®, PlylokMaster®

Please contact your representative to get detailed information about cover compounds availability.



Dimensions

Reference	Bucket Top
A	3 3/4"
B	6"
C	1 7/8"
D	6"
E	3/8"
F	1/4"
G	4 1/4"
H	2"
I	Any in spec
Min belt width	36"
Max belt width	72"
Available widths	Any in spec
Slit widths	Any in spec



Gauge Requirements

Min top cover	1/8"
Max top cover	As requested
Min bottom cover	0.00" (Bareback)
Max bottom cover	As requested
Between Ply Skim	Carcass dependent
Top Skim	Carcass dependent
Bottom Skim	Carcass dependent

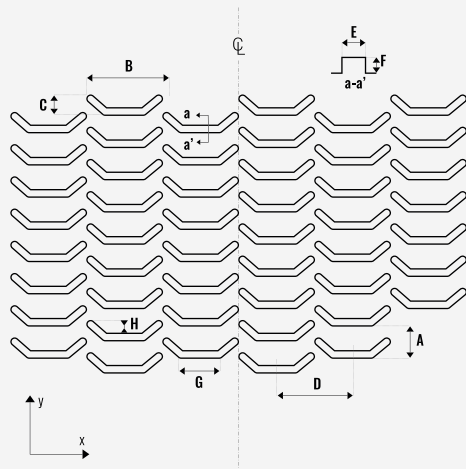
MINI-BUCKET



Carcasses

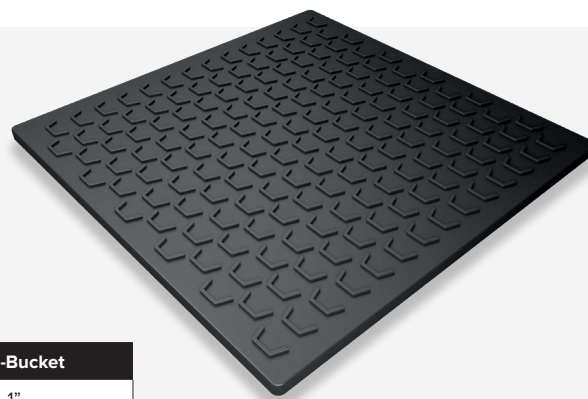
UsFlex®, Nova-X®, PlylokSupreme®, PlylokMaster®

Please contact your representative to get detailed information about cover compounds availability.



Dimensions

Reference	Mini-Bucket
A	1"
B	1 7/8"
C	5/8"
D	2"
E	5/32"
F	3/16"
G	1"
H	1/2"
I	Any in spec
Min belt width	36"
Max belt width	72"
Available widths	Any in spec
Slit widths	Any in spec



Gauge Requirements

Min top cover	5/64"
Max top cover	As requested
Min bottom cover	0.00" (Bareback)
Max bottom cover	As requested
Between Ply Skim	Carcass dependent
Top Skim	Carcass dependent
Bottom Skim	Carcass dependent

Tough Belts for Tough Applications

Fenner Dunlop is proud to offer the hardest working and longest lasting conveyor belts in the world. We make our belts ourselves including weaving and treating our own fabric, within North America. We do not import from other manufacturers in Asia or elsewhere. We set the standard for Conveyor Belts with our involvement in CEMA and ARPM. For over 150 years, we have tested, researched and developed our products using our own facilities. We employ world-leading experts who will ensure your belts last a lifetime!



(800) 661-2358

Industrial and Mining Conveyor Belting Sales



Fenner Dunlop

Omega Corporate Center
1000 Omega Drive, Suite 1400
Pittsburgh, PA 15205

Phone: 412-249-0700

Fax: 412-249-0701



fennerdunlopamericas.com

FENNER  DUNLOP
CONVEYOR BELTING

